

■ **Tech Bulletin for: Correct Mounting of Pressure/Temperature Sensors**

1. INTRODUCTION / BACKGROUND

The Doran Large and Small Bore Pressure / Temperature Sensors are a single enclosed and potted technology. They are robust and fit- for- purpose for operating in arduous and extreme environments with extensive Service Life.

However, they are not indestructible and so need to be installed / fitted to the Tyres Air Valve Stem correctly so as to protect the Air Valve Stems / Sensors from severe impact resulting in prematurely failure.

2. ISSUE.

The Doran Tyre Pressure / Temperature Sensors should NOT be fitted to the end of loose or unsecured long flexible valve extensions where the valve can swing and hit against the Wheel Rim.

If the extensions are too long they can swing and move during vehicle operation causing the Tyre Sensors to hit against the rim.

This continuous impacting can cause damage of internal components and subsequent Sensors failure. To prevent such damage to the Pressure / Temperature Sensors follow the steps below.

3. SOLUTION.

Correct Mounting of Pressure/Temperature Sensors (refer images):

- a) Pressure / Temperature Sensors should be mounted on a short valve stem, or a well secured extension to prevent movement of the Valve.
- b) Where the valve extensions are too long, change to a shorter valve extension or a separate dedicated valve should be fitted to mount the Sensors.
- c) Steel plate valve protection should be fitted to the rims beside the Valves and Sensors and in some applications around the Sensor to prevent rock strikes.

d) Only tighten Sensors firm by hand only, do not tighten with a tool!

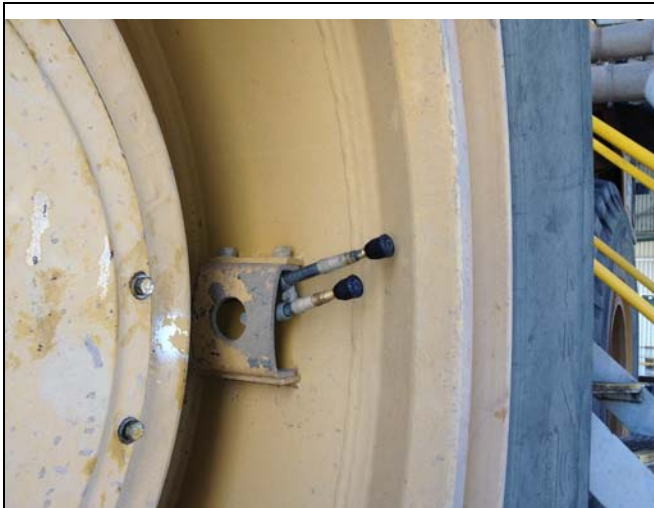


Figure 1 Incorrect mounting of Large Bore Sensors on HME. Flexible Air Valve Stems will allow "flog" against Rim. Valve Extensions will also be damaged.

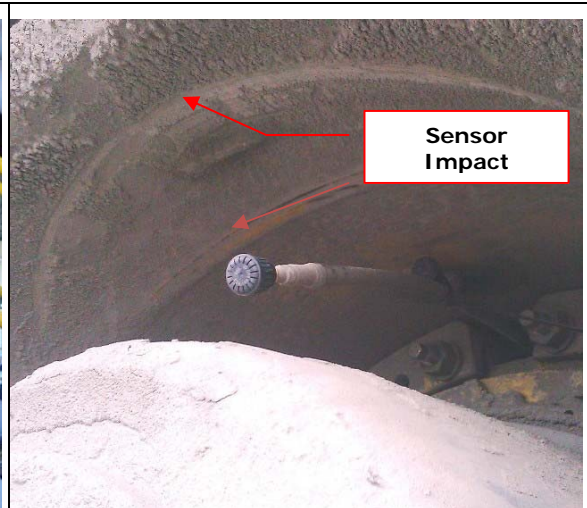


Figure 2 Incorrect mounting of Large Bore Sensors on HME. Flexible Air Valve Stems will allow "flog" against Rim. Valve Extensions will also be damaged

Please note that: LSM Technologies has made every endeavour to ensure that this documents is correct and upto date without error or omission, however it reserves the right to change its Policies and Procedures from time to time, without notice and at its sole discretion

Department	Technical	Pages	1 of 2	Issue Date	20/07/2013
Completed by:	Peterw			Revision #	0
File Name	TB- 0004- Doran Sensor Fittment v1 230713.docx			Revision Date	0

■ Tech Bulletin for: Correct Mounting of Pressure/Temperature Sensors



Figure 3 Correct Mounting of Large Bore Sensors on HME. Solid Air Valve Stem with Protection.



Figure 4 Correct Mounting of Large Bore Sensors on HME. Solid Air Valve Stem with Protection.



Figure 5 Correct Mounting of Small Bore Sensors on Truck / Trailer Tyre (note "T" Valve).



Figure 6 Correct Mounting of Small Bore Sensors on Truck / Trailer Tyre (note "T" Valve).

Please note that: LSM Technologies has made every endeavour to ensure that this documents is correct and upto date without error or omission, however it reserves the right to change its Policies and Procedures from time to time, without notice and at its sole discretion

Department	Technical	Pages	2 of 2	Issue Date	20/07/2013
Completed by:	Peterw			Revision #	0
File Name	TB- 0004- Doran Sensor Fittment v1 230713.docx			Revision Date	0