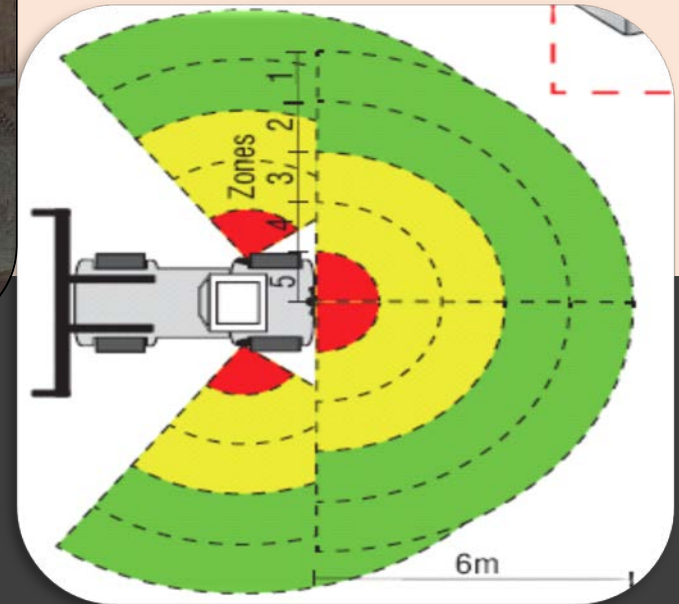
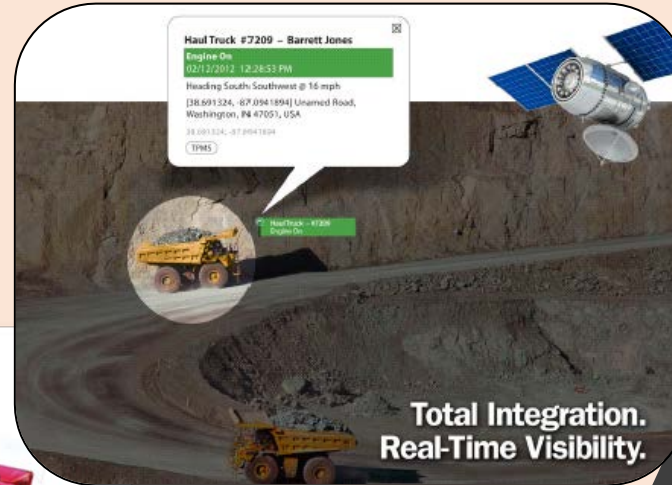


LSM TECHNOLOGIES

Our Capability Presentation

- ✓ *Workplace OH&S*
- ✓ *Equipment Damage*
- ✓ *Maintenance Cost- downs*
- ✓ *Productivity*



LSM Technologies are a “Solutions Provider”.

We strive to assist in protecting our customers **Equipment & Human Assets**.

This is achieved by offering select & unique **Product Technologies & Technical**

Engineering Services that are focused on providing:

- ☐ Reducing **Operating Costs**.
- ☐ Extended **Component Service Life**.
- ☐ Enhanced **Workplace Safety & Operator Health**.
- ☐ Reduced **Equipment Damage**.
- ☐ Increased **Productivity**.

- ☐ Mining / Earthmoving / Construction.
- ☐ Agriculture.
- ☐ Emergency Services.
- ☐ Warehousing / Materials Handling.
- ☐ On & Off Road Transport & Heavy Haulage.
- ☐ Cement & Quarrying.
- ☐ Chemical / Bulk Storage Plants.
- ☐ Railways.

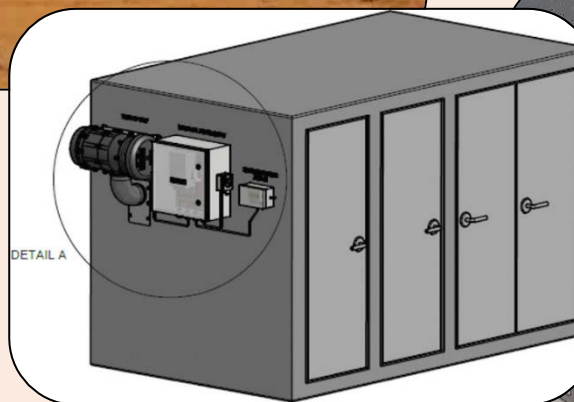
- ☐ Defence Industry
- ☐ Port Equipment.
- ☐ Waste Services.
- ☐ Cranes.
- ☐ And more.....!

OH&S Function

- ❑ Enclosure Pressurisers / Filtration Systems for Fixed & Mobile Plant Cabins.
- ❑ Electrical Enclosures & Cabinets.
- ❑ Filters- HEPA / MERV16, ABEK1 Gas, Odour, etc.

Significant Outcomes

- ❑ Clean- Air- Health Compliance.
- ❑ Filter life extension, Labour reduction.
- ❑ Extension of HVAC service life.
- ❑ Compliance validation via FSM™ Telemetry / Tracking System.
- ❑ Safety- Co2= Micro- sleeps, Fatigue, Concentration, Productivity.



OH&S Function

- ☐ Electronic Tyre Monitoring Systems (Pressure + Temperatures).
- ☐ Upto 8 x Tow Vehicles- monitor 180 Tyres.
- ☐ Monitor Low / High Pressures and Temps.
- ☐ Internal or External Tyre Sensors.
- ☐ Sensors chemical resistant against Conditioner Fluids

Significant Outcomes

- ☐ Enhanced Braking / Traction / Vehicle Control.
- ☐ Wheel offs.
- ☐ Catastrophic Tyre Failure / Blow- Outs.
- ☐ Tyre / Wheel Well Fires / Explosions.
- ☐ SAE & DG Certified / Tested.
- ☐ Reduced Fuel Consumption / Increased Tyre Service Life.
- ☐ Compliance validation via FSM™ Telemetry / Tracking System.

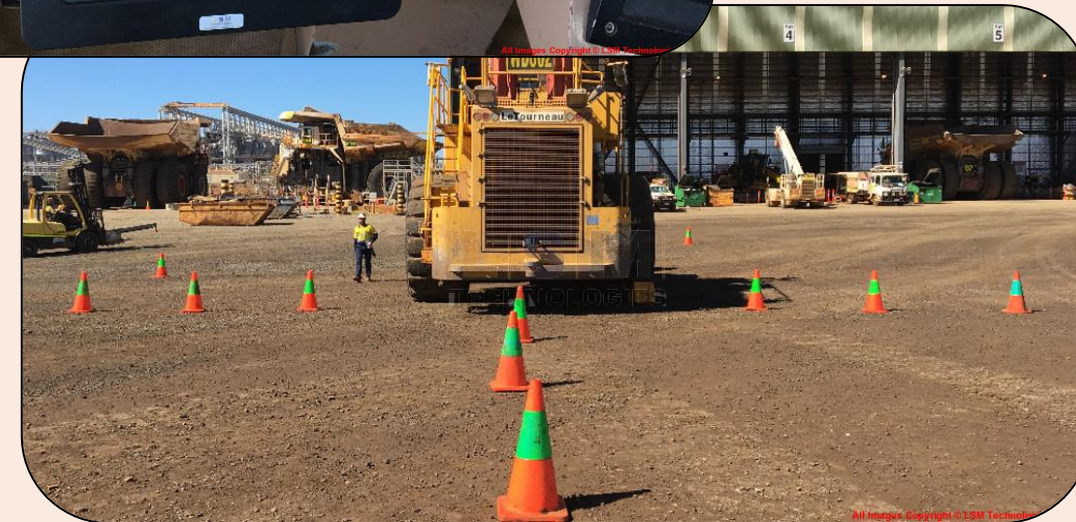


OH&S Function

- ❑ Heavy Duty Camera / Proximity Detection Solutions for any arduous applications.
- ❑ Integrated Operator Visibility + RadarEye Sensors.
- ❑ CAS- Collision Avoidance System, Work Area Vision / Proximity Detection.

Significant Outcomes

- ❑ Equipment Damage Control.
- ❑ Safety- Operator Visibility + Proximity Detection- Blind Spots.
- ❑ Compliancy- ISO 5006 / 16001 / MDG2007 / MDG15 / Other International Standards >20 years.
- ❑ Increased Productivity / Equipment Damage Control- V2P, V2V, V2I Interactions.
- ❑ Video Recording + Compliance validation via FSM™ Telemetry / Tracking System.

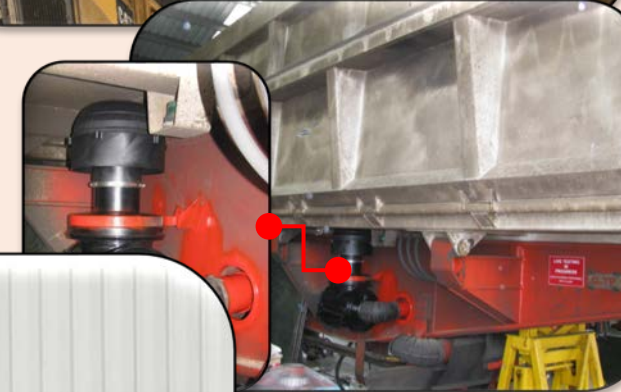


Function

- ❑ Series 9000 / Optimax Ejective Precleaning of Engine Intake Air.
- ❑ RESPA XLR Active Engine Precleaner & Filtration Systems.

Significant Outcomes

- ❑ Efficiency of debris removal >85- 97% in all weather conditions.
- ❑ Filter Service Life Extension Upto 40 x times Conventional Filters.
- ❑ Maintenance- Labour reduction.
- ❑ Enhanced Productivity- engine performance.
- ❑ Damage Control- better protection.
- ❑ Integration to FSM™ Telemetry / Tracking System.

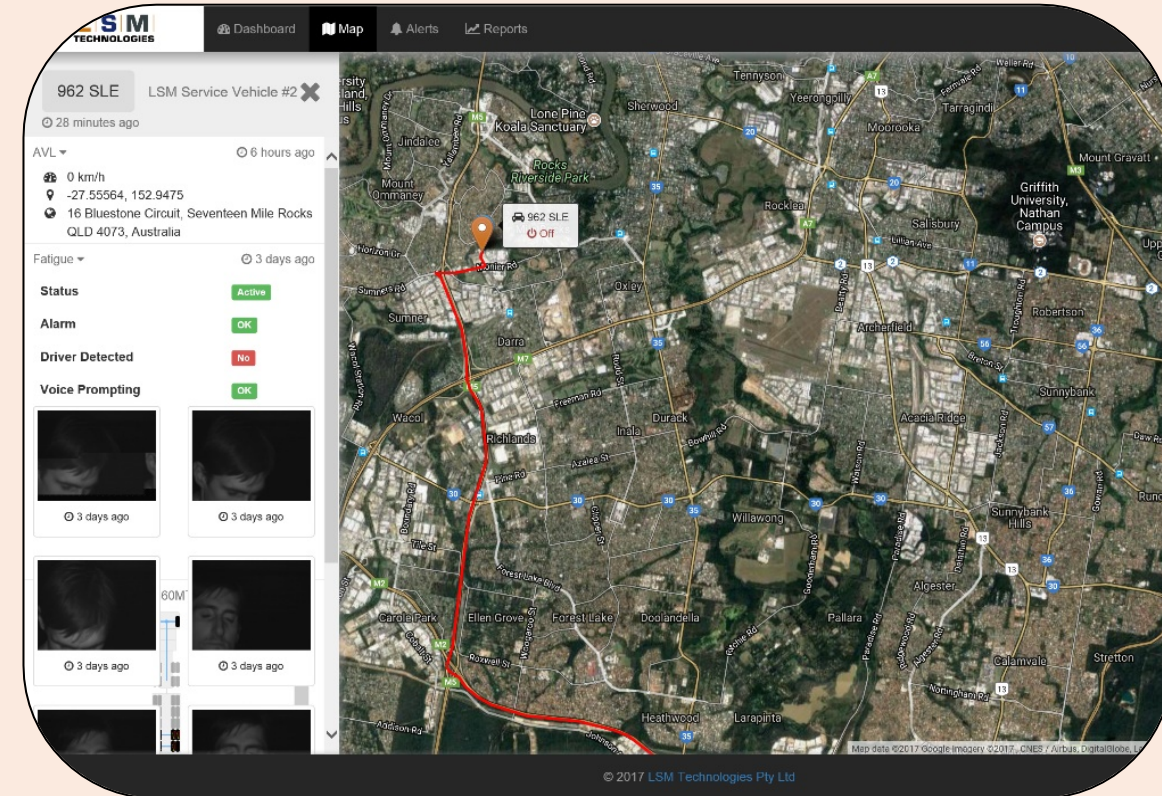


OH&S Function

- ❑ Driver Fatigue / Distraction Monitor of Drivers & Operators.

Significant Outcomes

- ❑ Real- time Monitoring for Fatigue & Distraction.
- ❑ Video & Still Image Recording.
- ❑ In Cabin Warning / Alerts.
- ❑ Enhanced Safety & increased Driver concentration.
- ❑ Compliance validation via FSM™ Telemetry / Tracking System.



OH&S Function

- ☐ Parkbrake is not applied.
- ☐ Driver leaves the Seat.
- ☐ Opens the Door.
- ☐ No Pressure on Accelerator.
- ☐ Speed <5 kph.

ALL of these conditions must occur at the same time to initiate Parkbrake Failsafe

Also if ParkBrake is engaged due to air pressure loss- control will monitor & prevent Brake Release / Rollaway during start- up. Works with Ignition On or Off.

Significant Outcomes

- ☐ Provide Audible and Visual alerts.
- ☐ Operator must physically apply Parkbrake & then Reset Control.
- ☐ Integrates into via FSM™ (Fleet Safety Manager) Telemetry to record all events, location, etc.

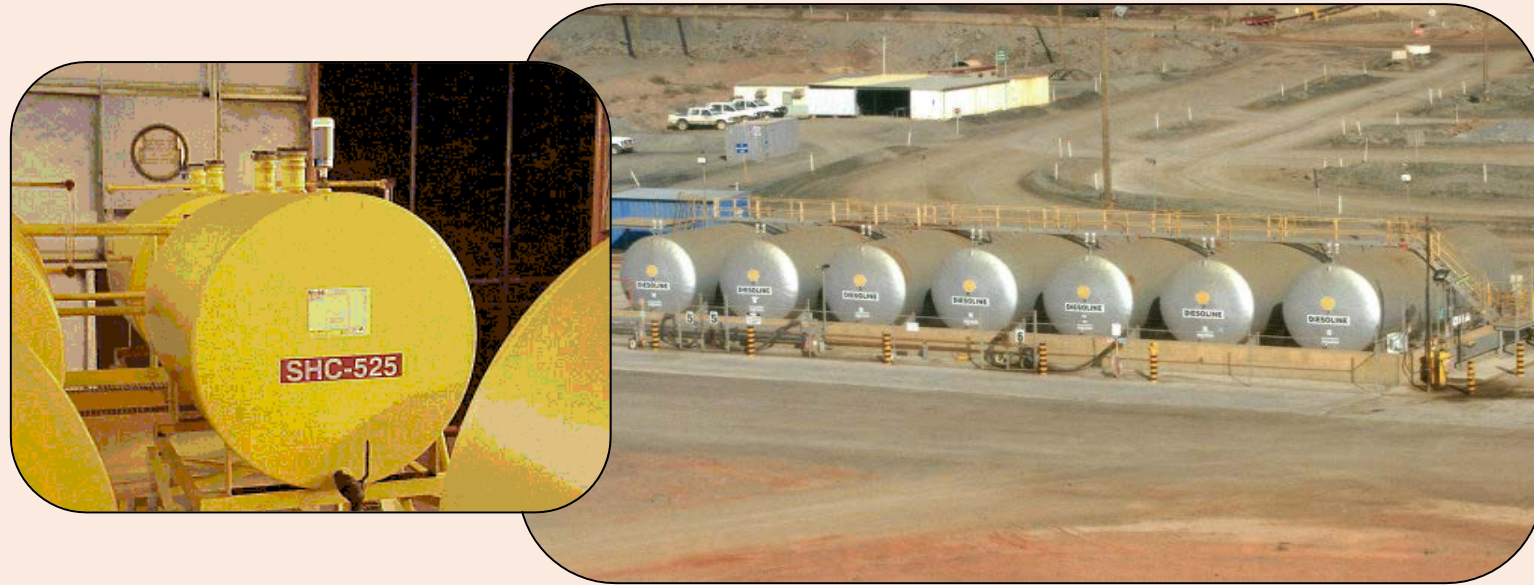


Function

- ❑ **Contamination Control: Desiccant Breathers for removal of Particulate & Moisture from head space of Fluid Storage Tanks.**

Significant Outcomes

- ❑ **Lower Filtration costs.**
- ❑ **Removal of Particulate- Moisture.**
- ❑ **Contaminated Fluid- Bacteria, Eng. Damage.**
- ❑ **Tank Corrosion, Fluid Dilution, Tank Cleaning.**
- ❑ **Safety + Health (access, toxic vapours).**

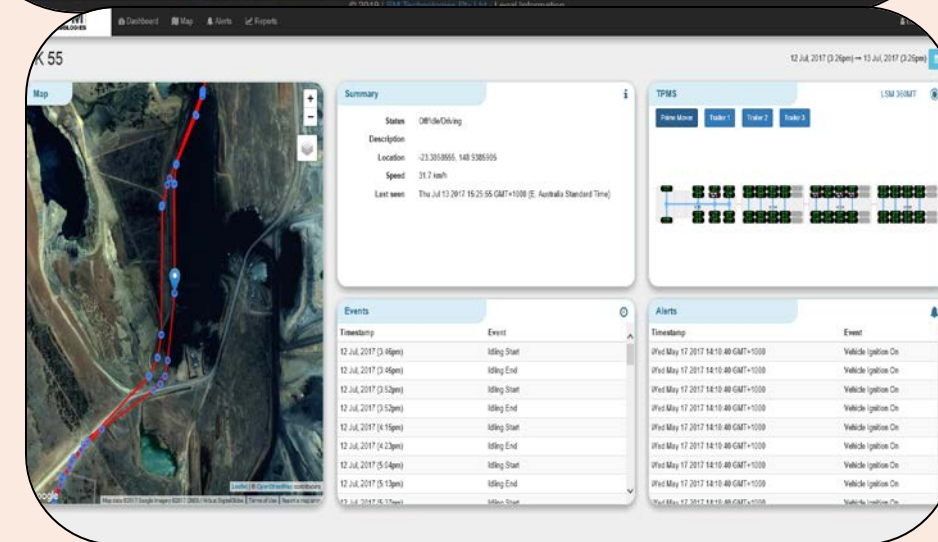
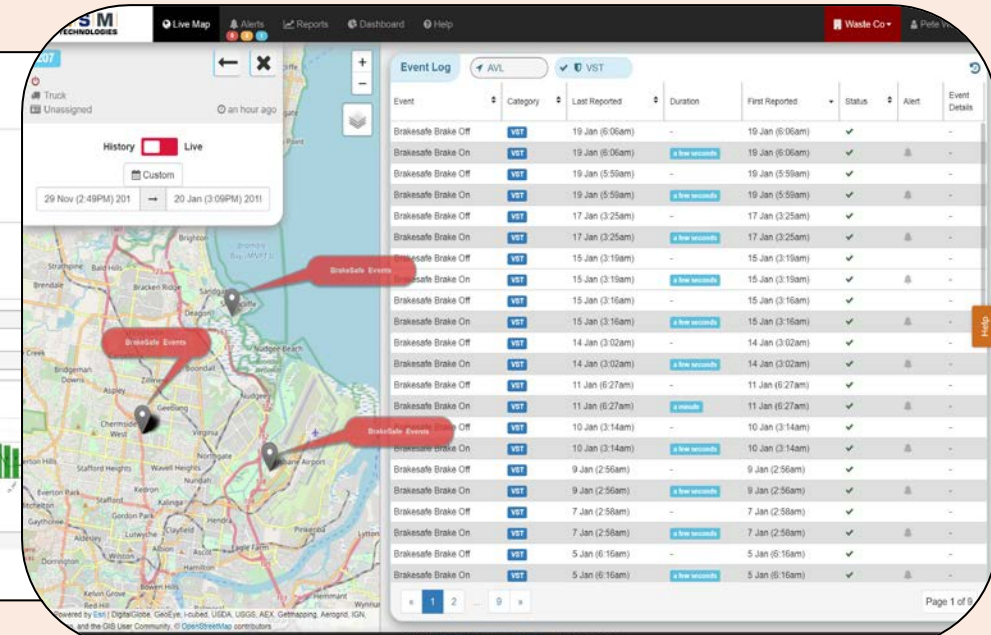
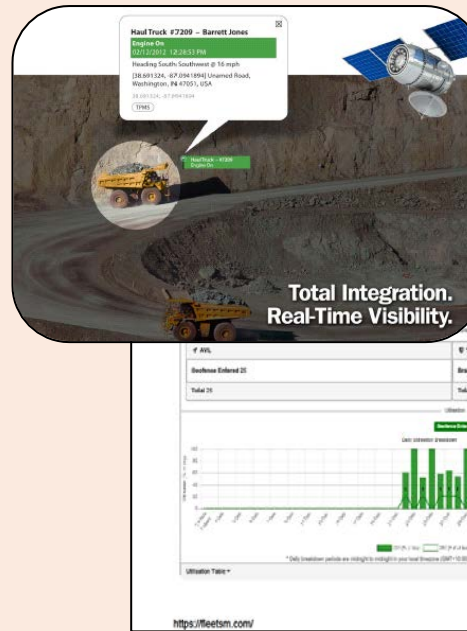


OH&S Function

- ❑ Fleet Tracking.
- ❑ Telemetry / Web- based Portal for Data Acquisition / Reporting / Analysis / Compliance.

Significant Outcomes

- ❑ Web based Fleet Management System.
- ❑ Dashboard & Reporting for Fuel, Location, Distance, Excess Speed, Idle Time, Geo- fencing.
- ❑ Integration of Mitigation Controls- TPM Systems / DFM Fatigue Monitor, Cabin Pressurisers / Filtration, Parkbrake / Rollaway, Auto- braking, Security Technology, etc.
- ❑ Real- time Live Monitoring Data / Despatch corrective action.
- ❑ Increased OH&S + Equipment Damage Control + Productivity.
- ❑ Compliance Tracking / Validation.
- ❑ On- going Management of OH&S Controls.



✓ **Understands** how to maintain and protect your **Human & Equipment Assets**

✓ **A Solutions Provider- Not a “Me Too”**

✓ Enhances Workplace **OH&S + Damage Control + Maintenance / Productivity**

✓ Adds **Value** to the unique **Product Technologies** it represents- not just **Supply-** but:

- **Engineering Design**
- **Installation / Commissioning**
- **Documentation / Manuals / Drawings**
 - **Training / Support**
 - **Inventory / Parts supply.**
 - **Trouble-shooting & Updating**

✓ Data **collection & integration** via **Telemetry / Web based Portal** is **critical** to optimising **OH&S Outcomes** and On- going **Management** of your Mitigation Controls

THANKYOU

[HOME](#)[PRODUCTS ▾](#)[NEWS](#)[SHOP](#)[ABOUT](#)[CONTACT](#)[LOG IN](#)

Tyre Monitoring, Engine Precleaners, Safety View / Proximity Detection, Driver Fatigue, Balancers / Sealants, Q-CABAIR, RESPA

Enhance Operator Protection, Equipment Damage, Reduce Costs

Welcome to LSM Technologies

Our specialised products and services will help you maintain your equipment, increase workplace safety, extending component service life and increase productivity.

- Reduce Operating Costs.
- Extend Component Service Life.
- Reduce Equipment Damage.
- Enhance Workplace Safety & Operator Health.
- Increase Productivity.

BE THE FIRST TO KNOW

Stay up to date with LSM's constantly evolving products and technology and sign up for our newsletter.

[Sign up](#)

LATEST NEWS »



16-Jun-16

Tyre Monitoring System adverts potential tyre fire

Q-CABAIR™ ENVIRO



Q-CABAIR™ Quality Cabin Environmental Air

The only ultimate Quality Cabin Environmental Air System in the world Certified & Guaranteed to best protect your Equipment & Human Assets

[View Products](#)

RESPA® CABIN- AIR



RESPA® Enclosure Pressurisers / Filtration Systems

RESPA® HyperFLOW Enclosure Pressurisers / Filtration Systems for small Fixed / Mobile Plant, Electrical Enclosures, Alternators, etc- Tested / Certified by Australian Regulator

[View Products](#)

SAFETY DETECTION



Safety Viewing & Proximity Detection Systems

Camera Viewing & Radar Proximity Detection Solutions for all Heavy Duty Applications for increased Safety, Productivity & Equipment Damage Control.

[View Products](#)

TYRE MONITORING



Tyre Monitoring Systems

Latest in Tyre Pressure & Temperature Monitoring Systems Safety Technology. System configurations for every Vehicle / Machine with Pneumatic Tyres.

[View Products](#)