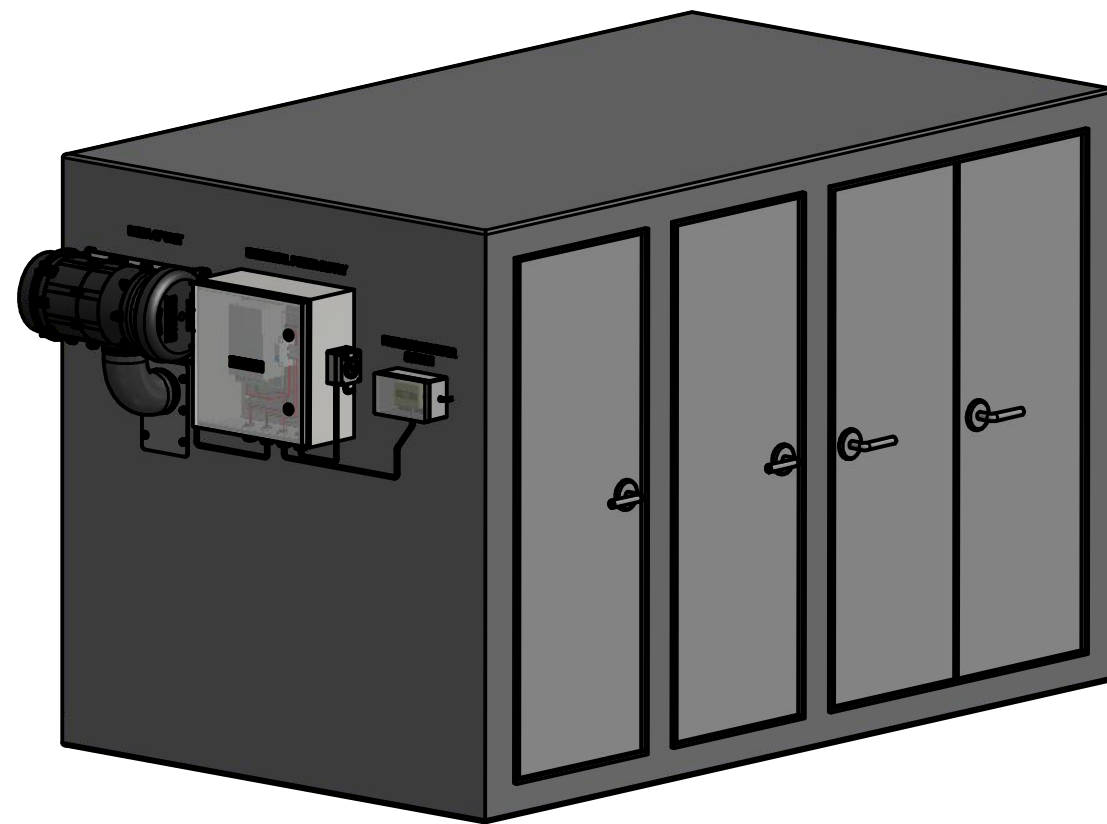




RESPA CF + ICP SENSOR QUALITY CABIn AIR  
SYSTEM - AIR PRECLEANER + FILTRATION  
+ PRESSURISER SYSTEM FOR  
ELECTRICAL CABINET



**Note:**

The Repsa System has been designed for a cabinet inclosure of maximum 3m x 2m x 2m. For larger Cabinet/Enclosure please consult with LSM Technologies.

The following design concept of our Sy- Klonе RESPA Quality Air System Technology is for Fixed Plant Cabins- in this case an Electrical Cabinet.

The System arrangement consists of:

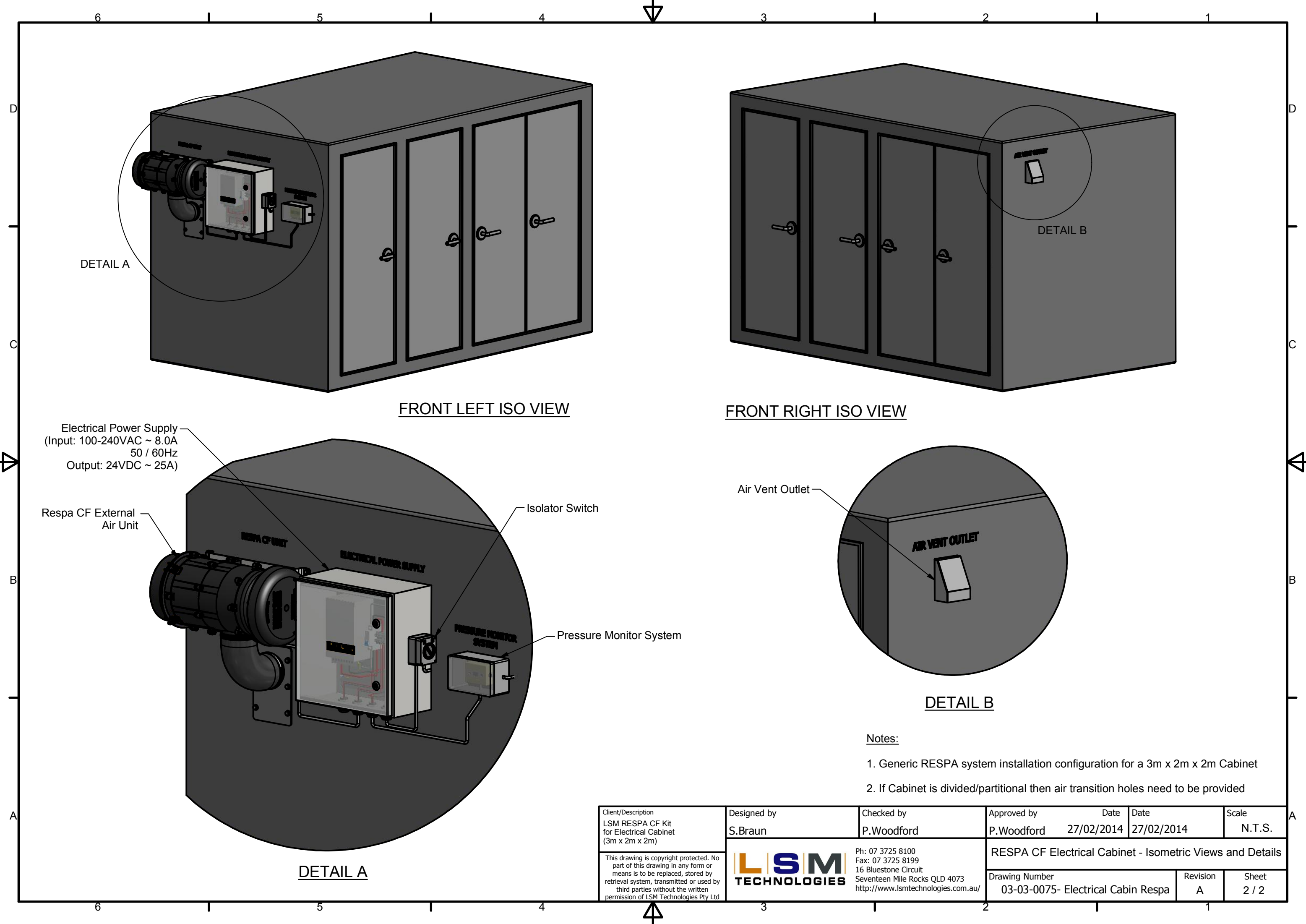
- a) External Air- RESPA CF Unit: for Precleaning, Filtration and Pressurisation of the Cabin. This unit Precleans the External Air (>96% of debris is returned to the external environment), provides Filtered "Fresh Air" and Air Flow to pressurise the Cabin.
- b) ICPSensor (In- Cabin Pressure Sensors) is to monitor the Cabin Pressure and Alarm if the Cabin Pressure drops below the set- point threshold. Audible and visual alarms are provided to indicate that the Cabin sealing has been compromised but primarily to indicate that the External Filter Element of the RESPA CF has become loaded, air flow has diminished and so the Filter Element requires replacement.

Operation of the RESPA Quality Cabin Air System is that the RESPA CF provides filtered air and pressurisation of the Cabin/Enclosure. A control vent is installed to control pressurisation and displacement of air from within.

The Objectives of the technology is to provide:

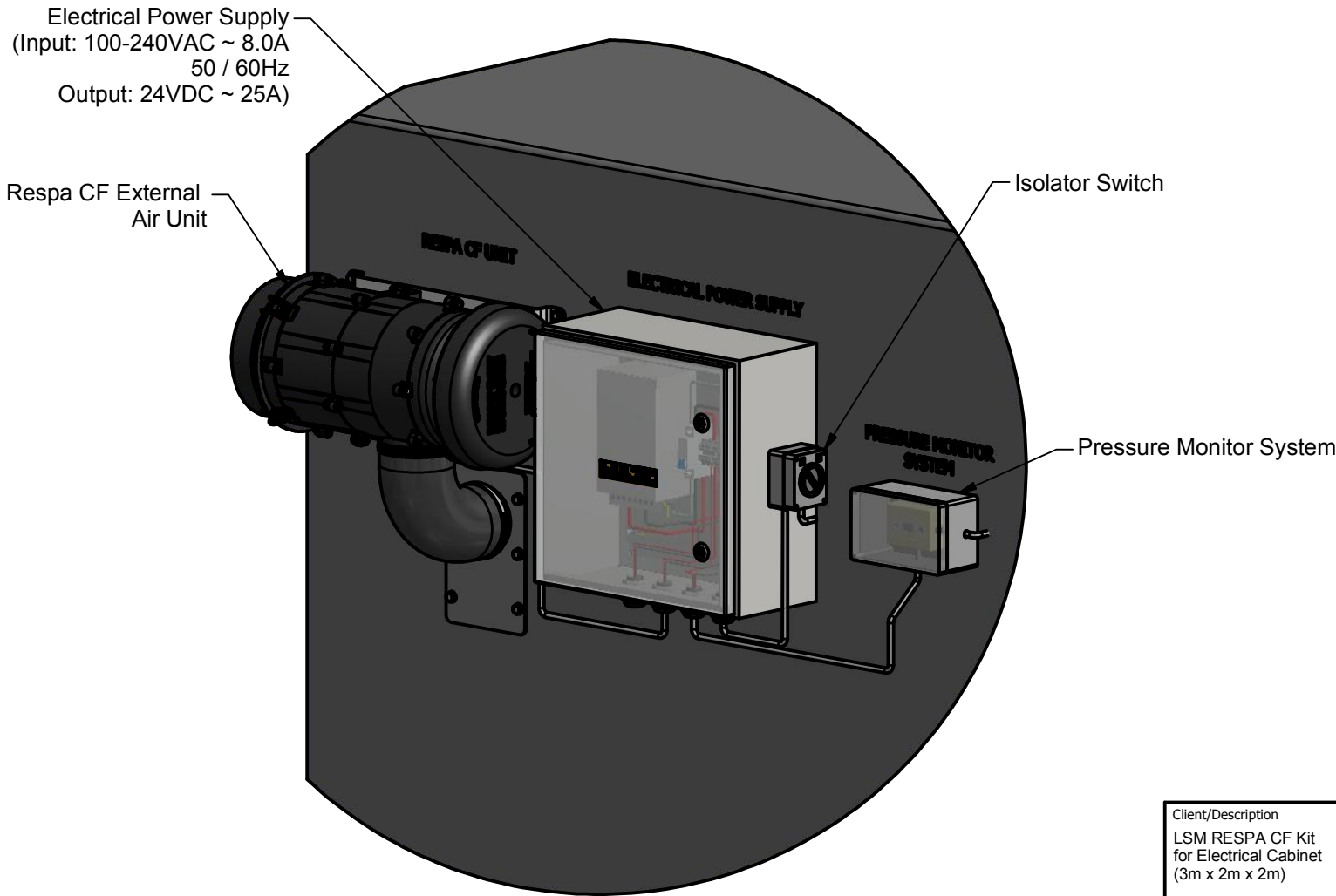
- **Highest protection of Operators Health to OEL Legislation Compliance for Airborne Particulate / Fibre Exposure.**
- **Increase Safety- avoids Co2 concentration in the Cabin that can cause fatigue risk, micro- sleeps, drowsiness and acidosis.**
- **Extension of Filter Element up to 1,000 hours.**
- **Protection and extension of HVAC Service Life and functionality.**
- **Increased Productivity.**

Client/Description LSM RESPA CF Kit for Electrical Cabinet (3m x 2m x 2m)	Designed by S.Braun	Checked by P.Woodford	Approved by P.Woodford	Date 27/02/2014	Date 27/02/2014	Scale N.T.S.
This drawing is copyright protected. No part of this drawing in any form or means is to be replaced, stored by retrieval system, transmitted or used by third parties without the written permission of LSM Technologies Pty Ltd	Ph: 07 3725 8100 Fax: 07 3725 8199 16 Bluestone Circuit Seventeen Mile Rocks QLD 4073 <a href="http://www.lsmtechnologies.com.au/">http://www.lsmtechnologies.com.au/</a>		RESPA CF Electrical Cabinet - Isometric Views and Details			
			Drawing Number 03-03-0075- Electrical Cabin Respa	Revision A	Sheet 1 / 2	

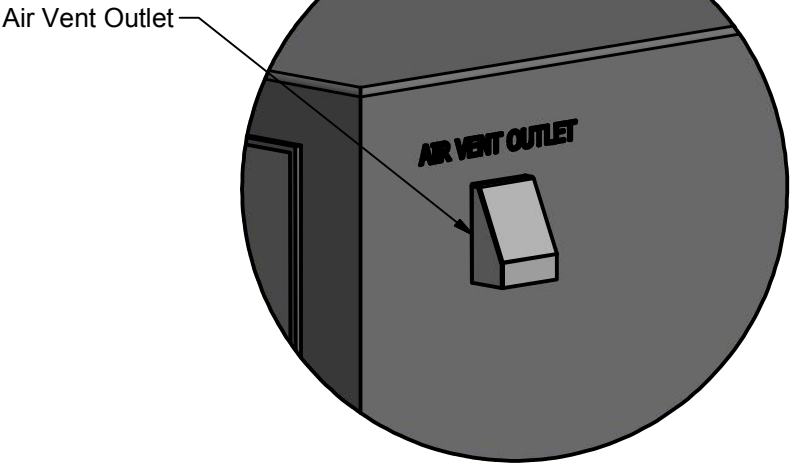


FRONT LEFT ISO VIEW

FRONT RIGHT ISO VIEW



DETAIL A



DETAIL B

- Notes:
1. Generic RESPA system installation configuration for a 3m x 2m x 2m Cabinet
  2. If Cabinet is divided/partitional then air transition holes need to be provided

Client/Description LSM RESPA CF Kit for Electrical Cabinet (3m x 2m x 2m)	Designed by S.Braun	Checked by P.Woodford	Approved by P.Woodford	Date 27/02/2014	Date 27/02/2014	Scale N.T.S.
RESPA CF Electrical Cabinet - Isometric Views and Details						
Drawing Number 03-03-0075- Electrical Cabin Respa				Revision A	Sheet 2 / 2	

This drawing is copyright protected. No part of this drawing in any form or means is to be replaced, stored by retrieval system, transmitted or used by third parties without the written permission of LSM Technologies Pty Ltd

LSM TECHNOLOGIES

Ph: 07 3725 8100  
Fax: 07 3725 8199  
16 Bluestone Circuit  
Seventeen Mile Rocks QLD 4073  
<http://www.lsmtechnologies.com.au/>